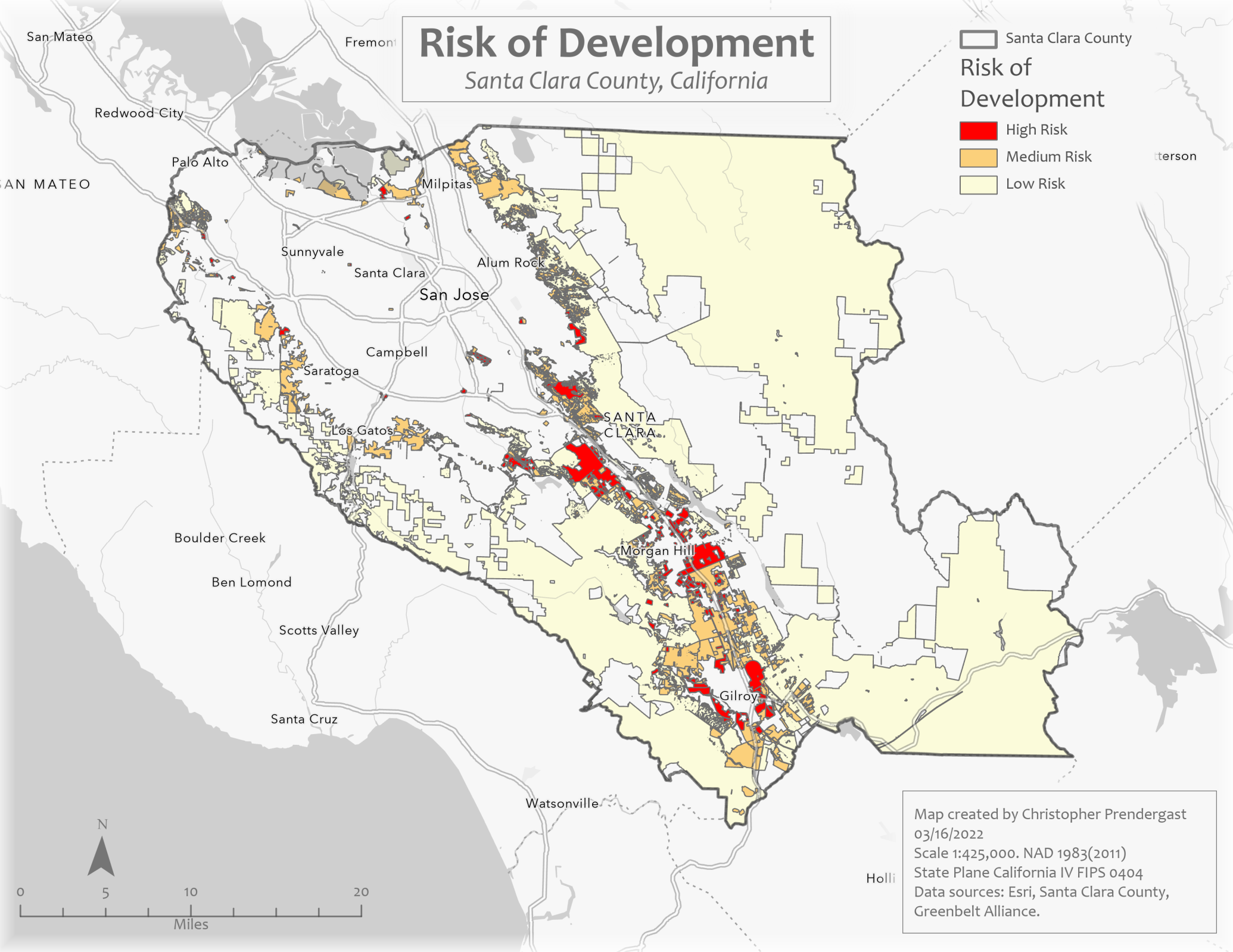


Risk of Development

Santa Clara County, California

Legend for Risk of Development:

-  Santa Clara County
- High Risk** (Red)
- Medium Risk** (Orange)
- Low Risk** (Yellow)



Map created by Christopher Prendergast
03/16/2022
Scale 1:425,000. NAD 1983(2011)
State Plane California IV FIPS 0404
Data sources: Esri, Santa Clara County,
Greenbelt Alliance.

Holli